



On the Road to a Sustainable Future.....

*Sarah Marshall
National Environment
and Sustainability Manager*

ability
committed to sustainability

Abigroup
Constructing Australia's Future



Sustainability - Business Drivers

- Reputation and social licence to continue to operate
- Strengthened relationships with clients and other stakeholders
- Stimulate internal innovation and learning



Business Drivers continued.....

- Climate change and carbon compliance



- *Energy Efficiencies Opportunities Act 2006 (EEO Act)*
- *National Greenhouse Emissions Reporting Act 2008 (NGERs Act)*
- Carbon Pollution Reduction Scheme 2010? (CPRS)

- Improved energy efficiencies and cost savings



Carbon Regulation = \$\$\$\$

GHG emissions
now have a
substantial cost

\$ Carbon

Energy costs
increase
considerably

Electricity

Gas

Fuel



Transport

Freight costs
increase

Waste

Waste costs
increase

Raw material and parts costs will go up
as manufacturers pass on their cost increases



Business drivers continued.....

- Rating schemes and tools eg. Australian Green Infrastructure Council (AGIC)
- Employer of choice
- Increased employee morale, motivation and productivity
- Corporate values ***“its just the right thing to do”***





ability

committed to sustainability



Our people

Ensuring a Strong, Healthy and Innovative Workforce

Environment

Minimise our Impact on Resources and Biodiversity

Corporate

Leadership and Compliance

Society

Actively Promoting Effective, Participative Systems of Governance

Business

Building a Strong, Stable and Profitable Business



ability
committed to sustainability

National Road Summit
2009

Sarah Marshall
Abigroup

Page 7
28 July 2009

Abigroup
Constructing Australia's Future



Environment in Focus

- Environmental Leadership
- Biodiversity
- Water Conservation
- Waste Minimisation
- Energy Efficiency

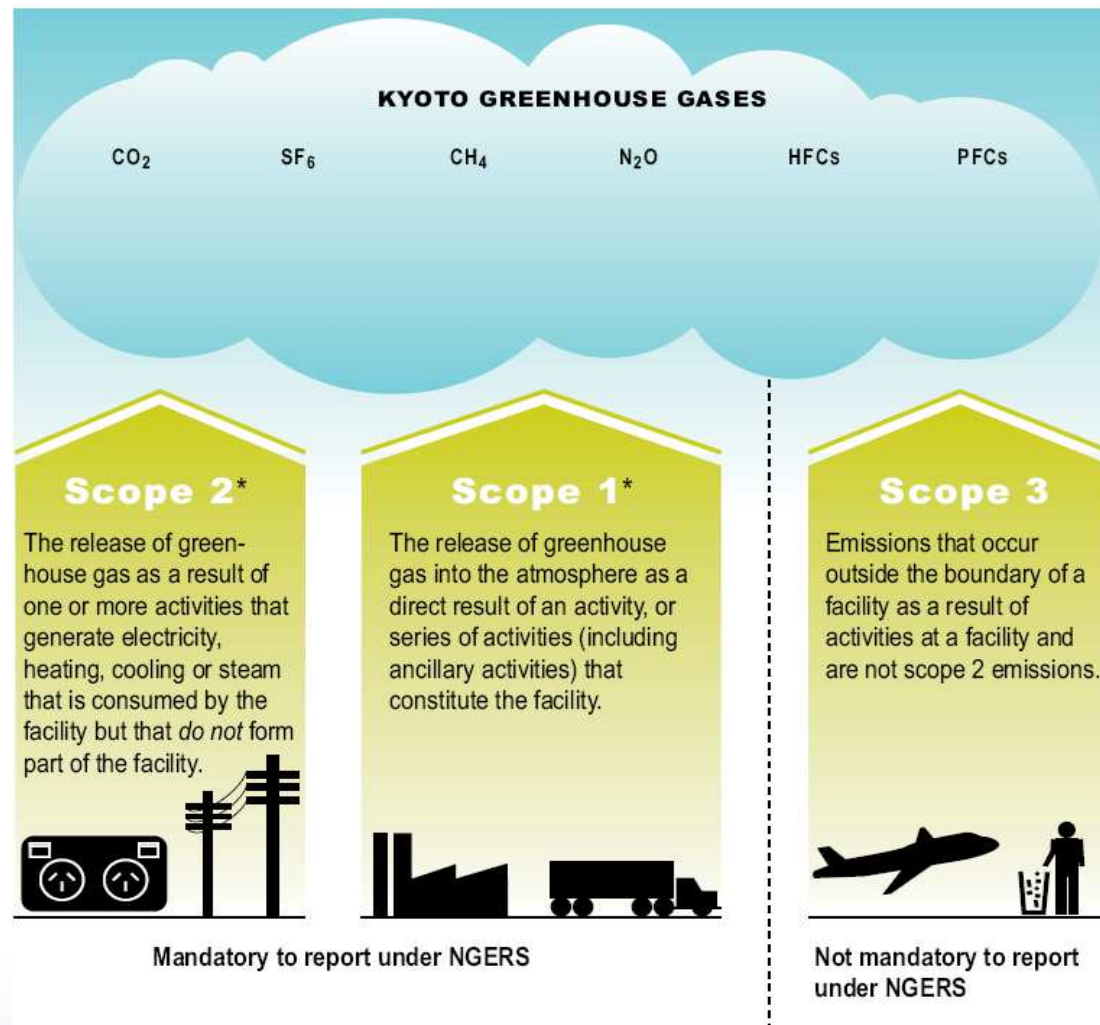


Abigroup GHG Reporting Tool

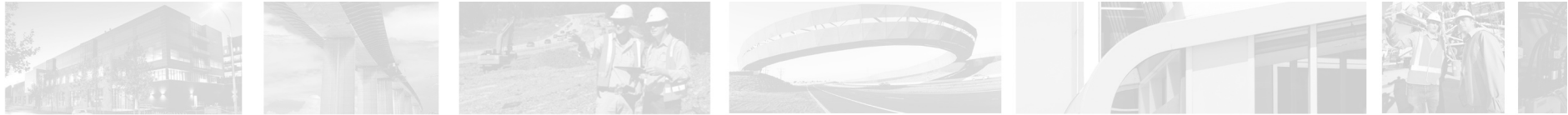


ORACLE CERTIFIED PARTNER

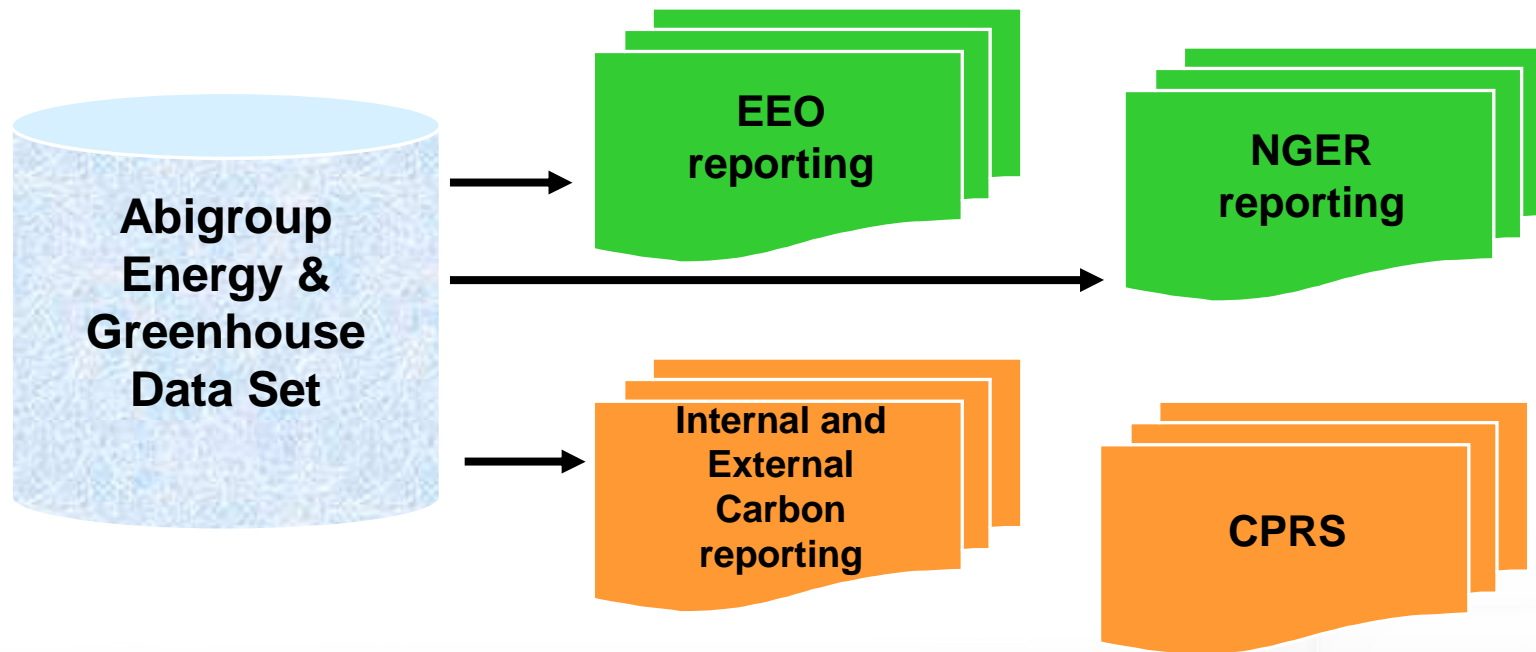
- Developed in partnership with Ndevr and fits in to existing financial reporting system (JDE)
- Meets legislative reporting requirements
- Ability to provide reports to key stakeholders and clients
- Ability to accurately assess carbon footprint and set company targets
- Ensures auditable and high integrity of data and emissions reports



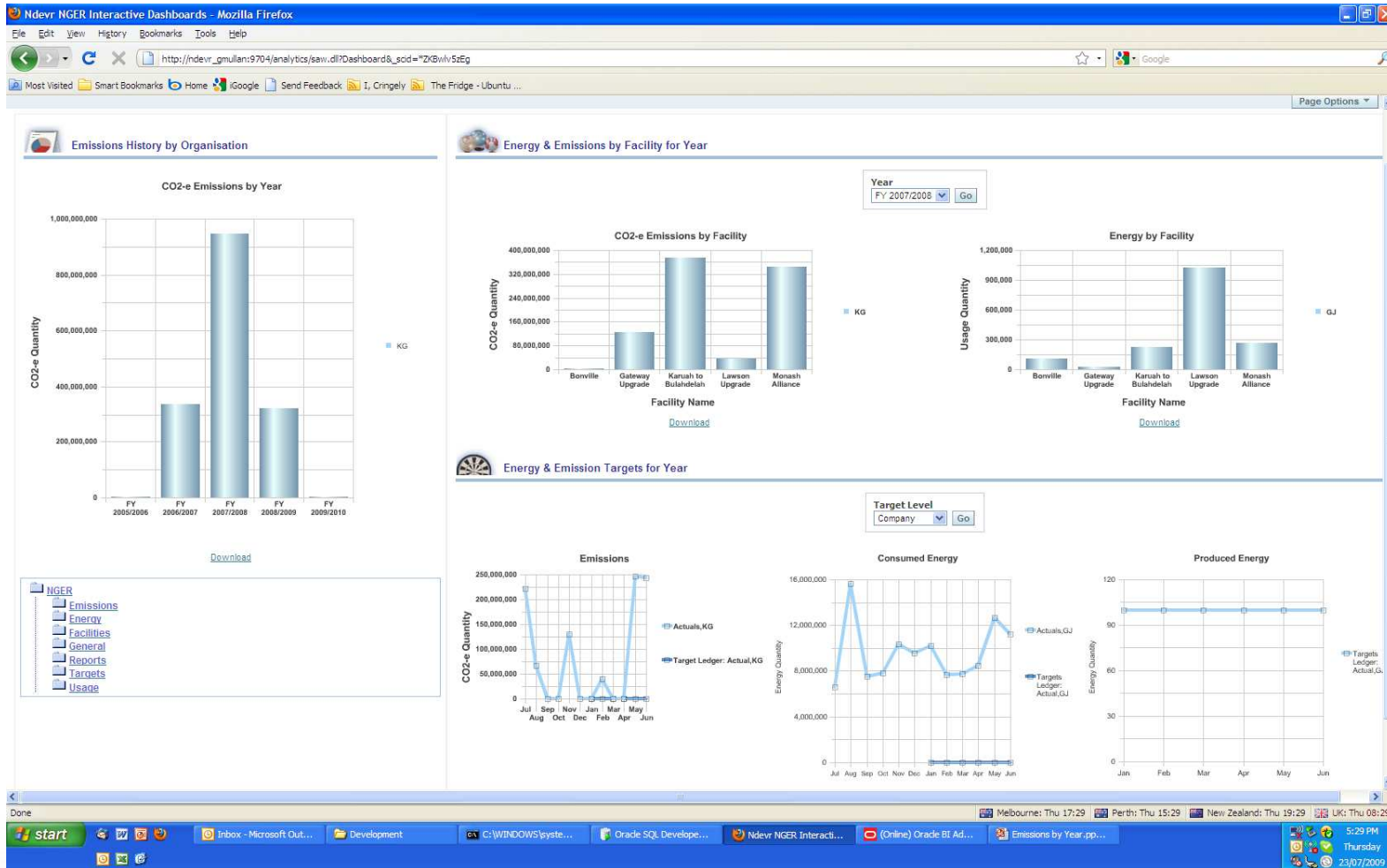
- Reports Scope 1 (Direct) and Scope 2 (Indirect) emissions separately or in any combination



Abigroup GHG Data Set

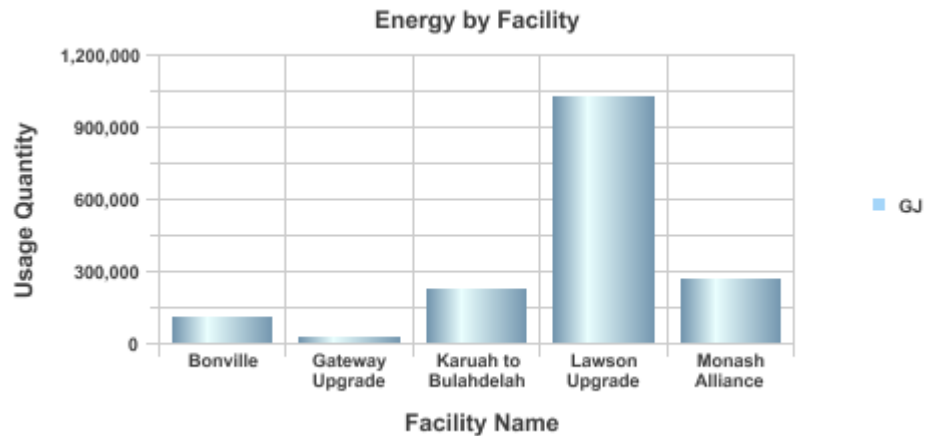
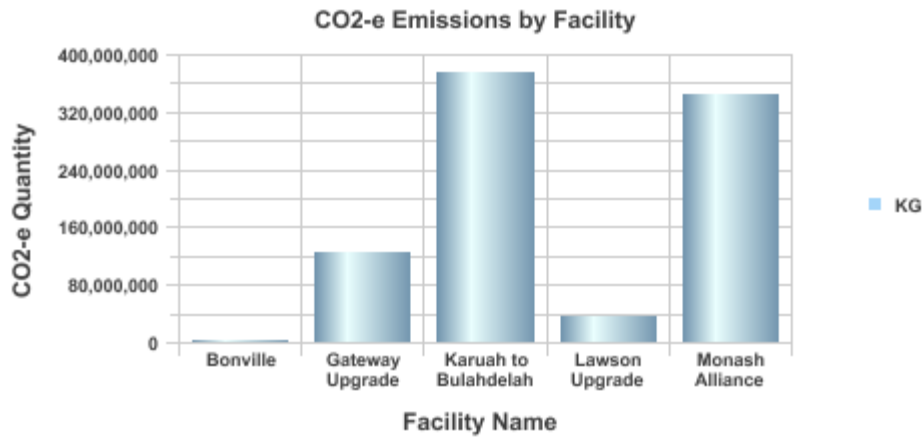


GHG Reporting Tool





GHG Reporting Tool



Note: Energy and emissions data not accurate. Example data set created for the purpose of presentation



Subcontractor Compliance

- Sub-Contractors are required to provide energy use and emissions data to company with Operational Control
- Currently working with major Sub-Contractors to assist with reporting requirements
- Feasibility Assessment with Ndevr in the development of a Sub-contractor portal



Subcontractor Portal



JDE-NGER - Subcontractor Data Entry



Sub Contractor Details

Sub Contractor ID: 81154
Sub Contractor Name: Cates Garage Services
Sub Contractor A.B.N.: 12 345 678 913

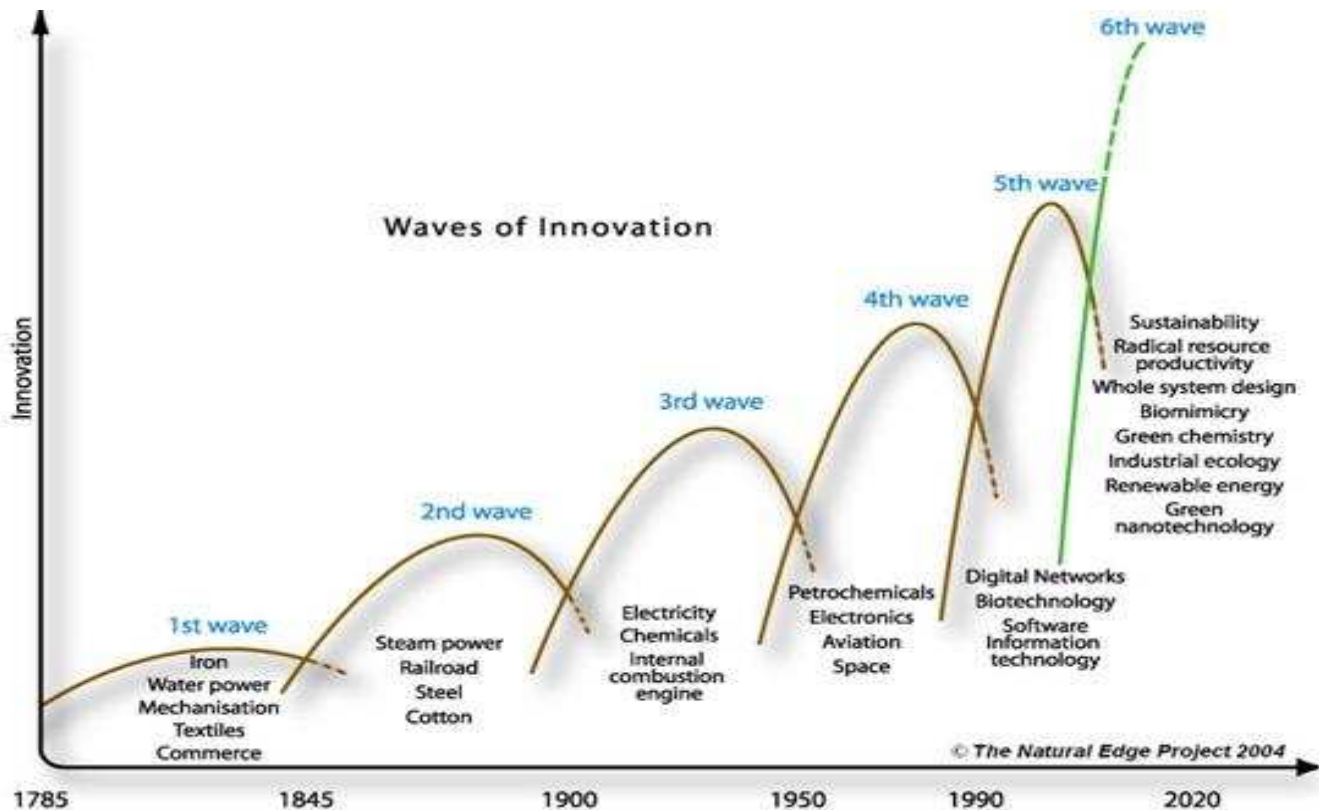
New Batch Unapproved Batch Processed Batch

New Batch

Project	Batch Code	Asset	Emission Source	State	Volume
NGER - Company A - Project A1	Ground Fuel		TRANSPORT FUEL - GENERAL - DIESEL OIL	NSW	1,000,000
<input type="button" value="Add"/>	<input type="text"/>	<input type="text"/>	<input type="text"/>	<input type="text"/>	<input type="text"/>



The Future – The Next Wave of Innovation!





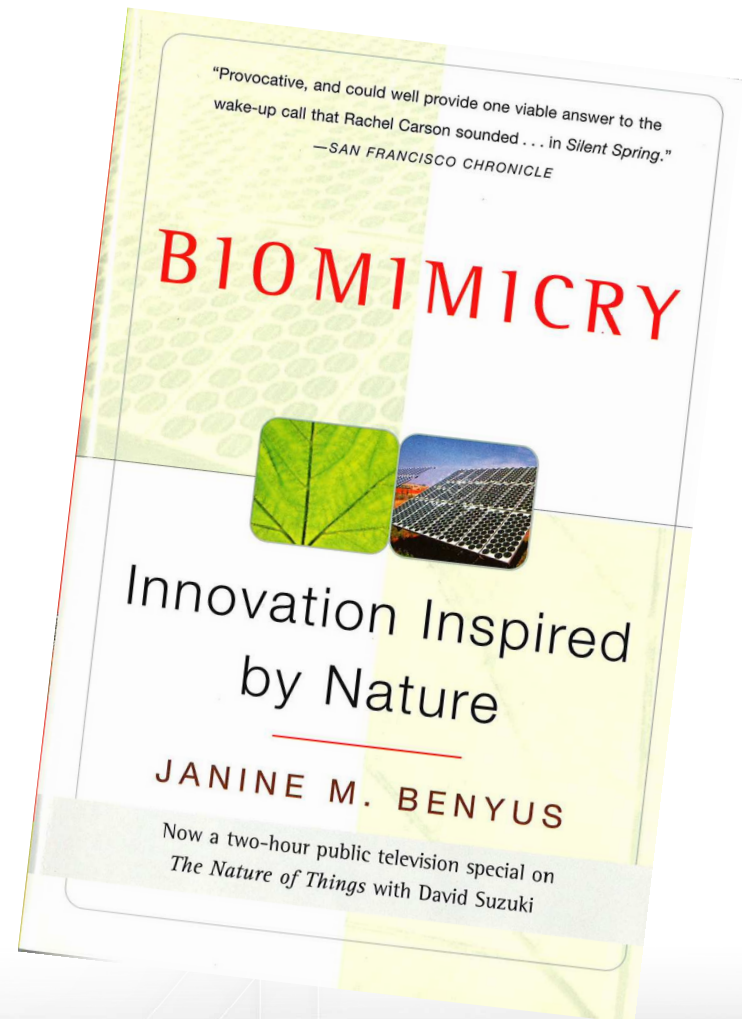
Innovation in Construction

Examples

- Higher extender cements (higher % slag, fly ash)
- Alternative cementitious materials
- Steel reinforcing and structural steel sourced from recycling
- Lower temperature asphalt production
- Recycled concrete to replace virgin aggregate

Biomimicry

- A science that studies nature's models and then imitates or takes inspiration from these designs and process to solve human problems e.g. a solar cell inspired by a leaf





Transport Example – The Kingfisher



Reference: Biomimicry Institute



Survival

NEXT EXIT ↗